

329 Castlerigg 32

as 029 but with AABB in place of AAB

1

arr. Mark Iliff

Click the shears

trad. Australian

♩ = 120

C

C/G

F

G

C

D

G

1A



6

C

C/G

F

G

C

1. F C

2. F C



11

C(sus2)

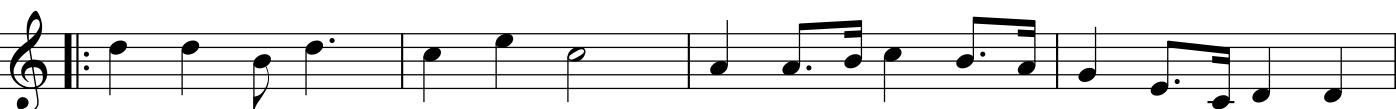
C

F

C

C(sus2)

1B



15

C

C

F

G

C

1.

2.



Swanee River

Stephen Foster 1851

20

G

Bm⁷

Em

C

D

G

D

2A



25

G

Bm⁷

Em

C

G

D

1. G

2. G



30

D

D⁷

D

G

C

D

2B



34

G

Bm⁷

Em

C

G

D

1. G

2. G



Harvest Home

trad. (claimed variously as English, Irish & Scottish ... so defo not Welsh, then)

39 — D G A A⁶ A⁷ A⁶ A D

3A

44 D G A A⁶ A⁷ A⁶ D

48 A A⁶ A⁷ A⁶ A A A⁶ A⁷ A⁶ A D 3 3

3B

52 D G A A⁶ A⁷ A⁶ D